

Glendale Collision Center, Inc.

Quality Body | Work Paint | Frame



California
Autobody
Association



ACCREDITED
BUSINESS

GCC



4690 San Fernando Rd
Glendale, CA 91204

Tel: 818.546.8809

Fax: 818.546.8708

www.glendalecollision.com



MADE OF 100% RECYCLED PAPER



Table of Contents



Company Info & Equipment.....	Page 1
Company Vision Statement.....	Page 2
Services.....	Page 3
Equipment	Page 4
Liability Insurance.....	Page 4
Hourly Rates & References.....	Page 5
Environment.....	Page 6
Additional photos.....	Page 7





Company Information, Facilities & Equipment

Legal Shop Name: Glendale Collision Center, Inc.

Legal Address: 4690 San Fernando Road
Glendale, CA 91204

Phone: (818) 546-8809

Fax: (818) 546-8708

E-Mail: info@glendalecollision.com

Website: <http://www.glendalecollision.com>

Federal ID: 28-0444980

Hours of Operation: Monday - Friday: 7:00am - 4:30pm
Saturday: 7:00am - 12:00pm

www.glendalecollision.com





Company Vision Statement

Since GCC first opened our shop, we have been driven by one simple desire. "To become the finest body shop possible." As our many clients will now tell you, we quickly attained that status and became the shop that we always wanted. A shop that allowed us to perform at the highest standard. A standard that our clients so richly deserve.

We pledge to remember that our clients are our most important asset. We will work diligently to ensure that at all times their interests are always paramount and we will fight to ensure that the damaged area of their vehicles are brought back to original manufacturer's specifications.

As manufacturers incorporate more exotic materials into their vehicles, GCC will ensure that our technicians have been sent to the appropriate schools to learn the art of repairing these new materials in the most efficient manner possible.

GCC's commitment to the environment will never falter. We constantly monitor our carbon footprint and whenever possible, modify our procedures to reduce our contaminate output. We have already installed two heated down draft spray and bake paint booths as well as water clarifiers in both locations. We have expanded our waste water collection process and are now able to send more contaminated water through our clarifiers. Our next major project is to install solar panels to both roofs of the shop. Any and all materials used during your vehicle's repair process have been approved by the South Coast Air Quality Management District.





Services

Services: Complete body repair, touch up or full paint work. Plastic bumper repair. Frame alignment, mechanical, electrical services applied to the body repair. Air conditioning service.

Towing Company: Sebo Towing **Contact:** Sebo **Phone:** (818) 771-9811

Square Footage of Shop: ~10,000 sq.ft. **Gated Parking Area:** 8,000 sq.ft.

All vehicles are stored in a secured area and monitored by strategically placed cameras.

Security System Company: Business Monitoring Systems

Security Cameras: 16 Camera setup with DVR support

Business & Trade Association Memberships:

- I-CAR
- Assured Performance
- Direct Repair Program
- Enterprise Rent-A-Car Luxury Division

www.glendalecollision.com





Equipment

Paint Booth Type: Two paint mixing systems, two downdraft heated spray and bake spray booths with an attached mix room. Paint computer systems with scales.

Unibody Frame Pulling System: Frame Rack, Chief easy liner, electronic measuring system

Vehicle Lifts: Four post lifts

Welders: 2 MIG (Metal Inert Gas) Welders, 110 volt, 220 volt. Plastic Welder, Gas Welder, Arc Welder, Spot Welder

A/C Service: Snap on Air Conditioning Recharge Machine



Labor Rates Hourly

Body: \$52

Refinish: \$52

Mechanical/Electrical: \$125

Frame: \$76

Paint/Materials: \$38

All labor rates are based on Mitchell flat rate system.





Environment

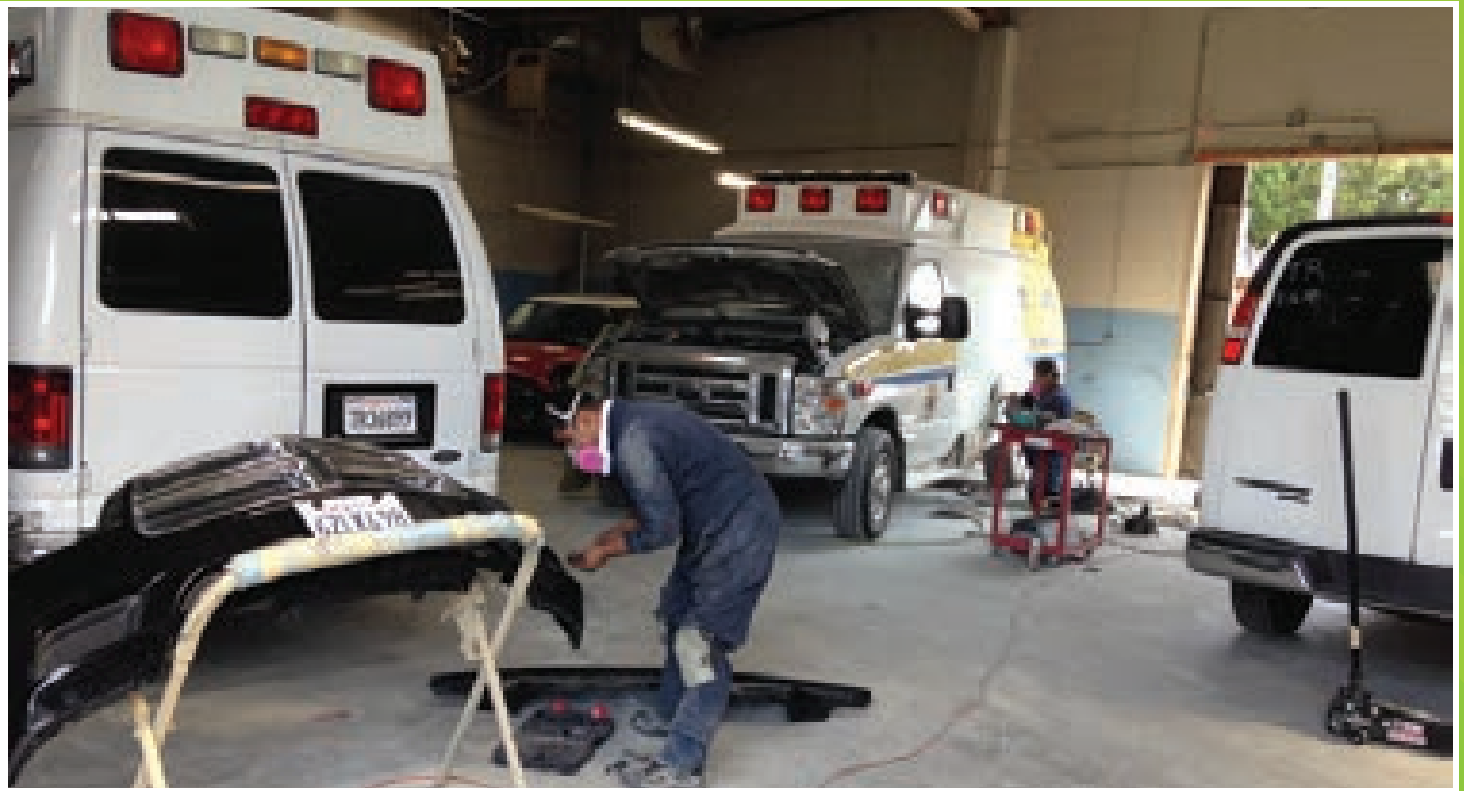
Like many people we are extremely conscious of our environment and where possible, we have installed systems and equipment that reduces our carbon footprint. We use only paint and materials approved by the South Coast Air Quality Management District.

We installed two state of the art heated downdraft paint spray booths. These multi filtered units contain the normally exhausted particulates within this multi filter system preventing them from entering the atmosphere through the booths exhaust system. We are in the planning stages of installing solar panels on the roofs of our shops. All damaged metal and plastic components replaced during the repair process are sent to a recycling company for processing. This also applies to the packaging the parts are shipped in.

All water used in both the pre-paint and detail process flows through our three stage clarifier where it is cleaned of contaminants prior to entering the drainage system. After acquiring our new facility the same clarifier system was immediately implemented.









Glendale Collision Center, Inc.

4690 San Fernando Rd • Glendale, CA 91204

Tel: 818.546.8809 • Fax: 818.546.8708

www.glendalecollision.com



California
Autobody
Association



ACCREDITED
BUSINESS



MADE OF 100% RECYCLED PAPER